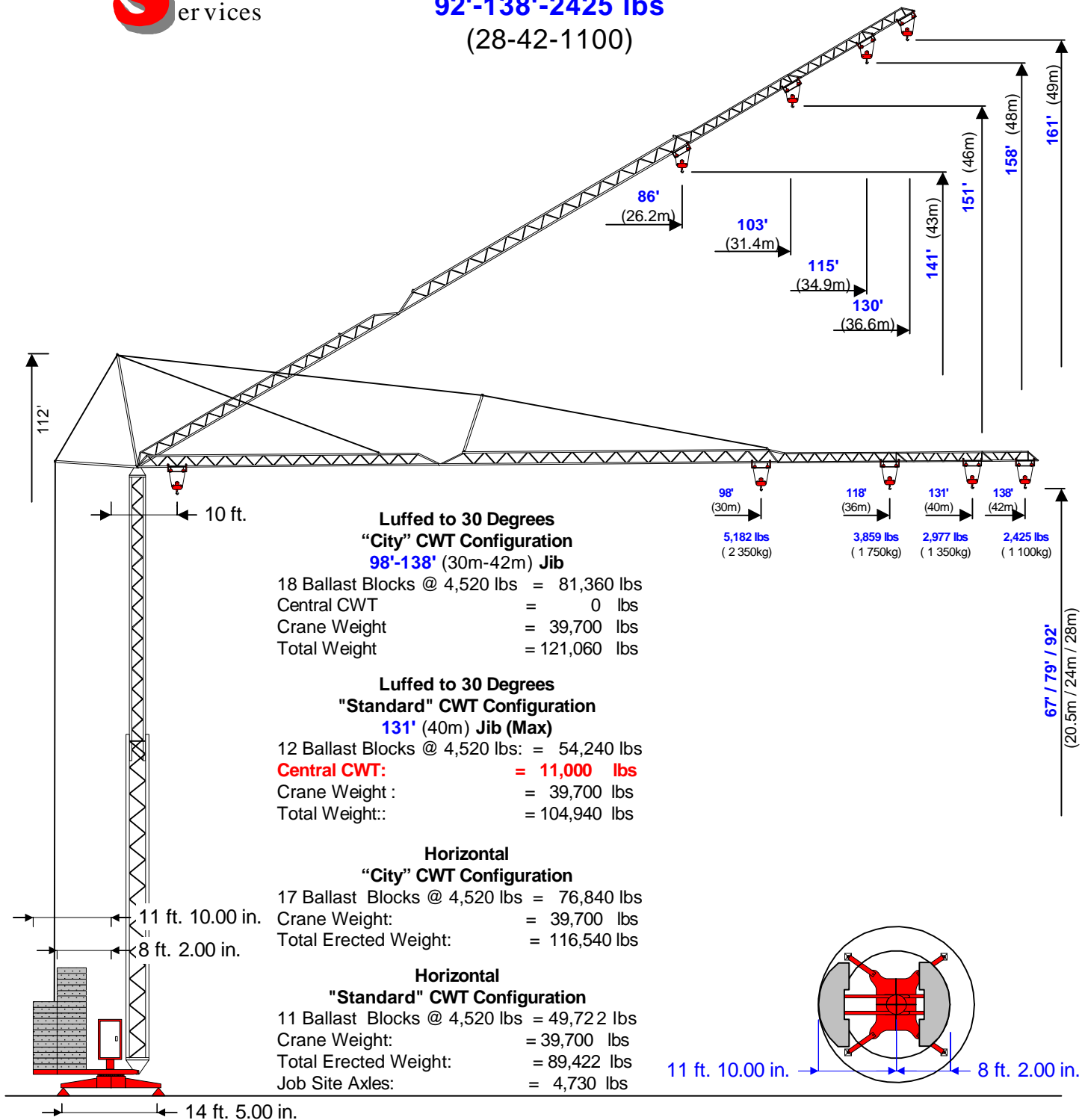


Peiner Self-Erecting Crane SMK-308

92'-138'-2425 lbs
(28-42-1100)

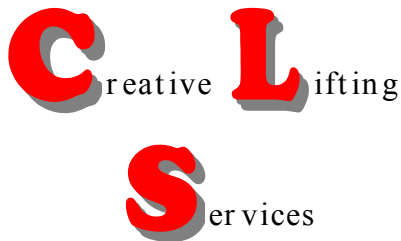
30 Degree Jib Inclination
2,425 lbs Constant



Creative Lifting Services Inc.

Call Will Phone: 303-659-8102 Fax: 303-659-5314

will@creativelifting.com www.creativelifting.com



Peiner Self-Erecting Crane SMK-308

2 Part	Hook	Ft.	51	62	80	98			
Block	Radius	Meters	15.54	18.87	24.25	30			
Jib Length	98'	Lbs	5,513	5,513	5,513	5,182			
	30m	KG	2.500	2.500	2.500	2.350			
2 Part	Hook	Ft.	48	58	74	89	118		
Block	Radius	Meters	14.53	17.62	22.61	27.14	36		
Jib Length	118'	Lbs	5,513	5,513	5,513	5,182	3,859		
	36m	KG	2.500	2.500	2.500	2.350	1.750		
2 Part	Hook	Ft.	43	52	67	83	106	131	
Block	Radius	Meters	13.11	15.86	20.3	25.37	32.2	40	
Jib Length	131'	Lbs	5,513	5,513	5,513	5,182	3,859	2,977	
	40m	KG	2.500	2.500	2.500	2.350	1.750	1.350	
2 Part	Hook	Ft.	39	46	59	73	95	117	138
Block	Radius	Meters	11.77	14.02	18.13	22.33	28.86	35.56	42
Jib Length	138'	Lbs	5,513	5,513	5,513	5,182	3,859	2,977	2,426
	42m	KG	2.500	2.500	2.500	2.350	1.750	1.350	1.100

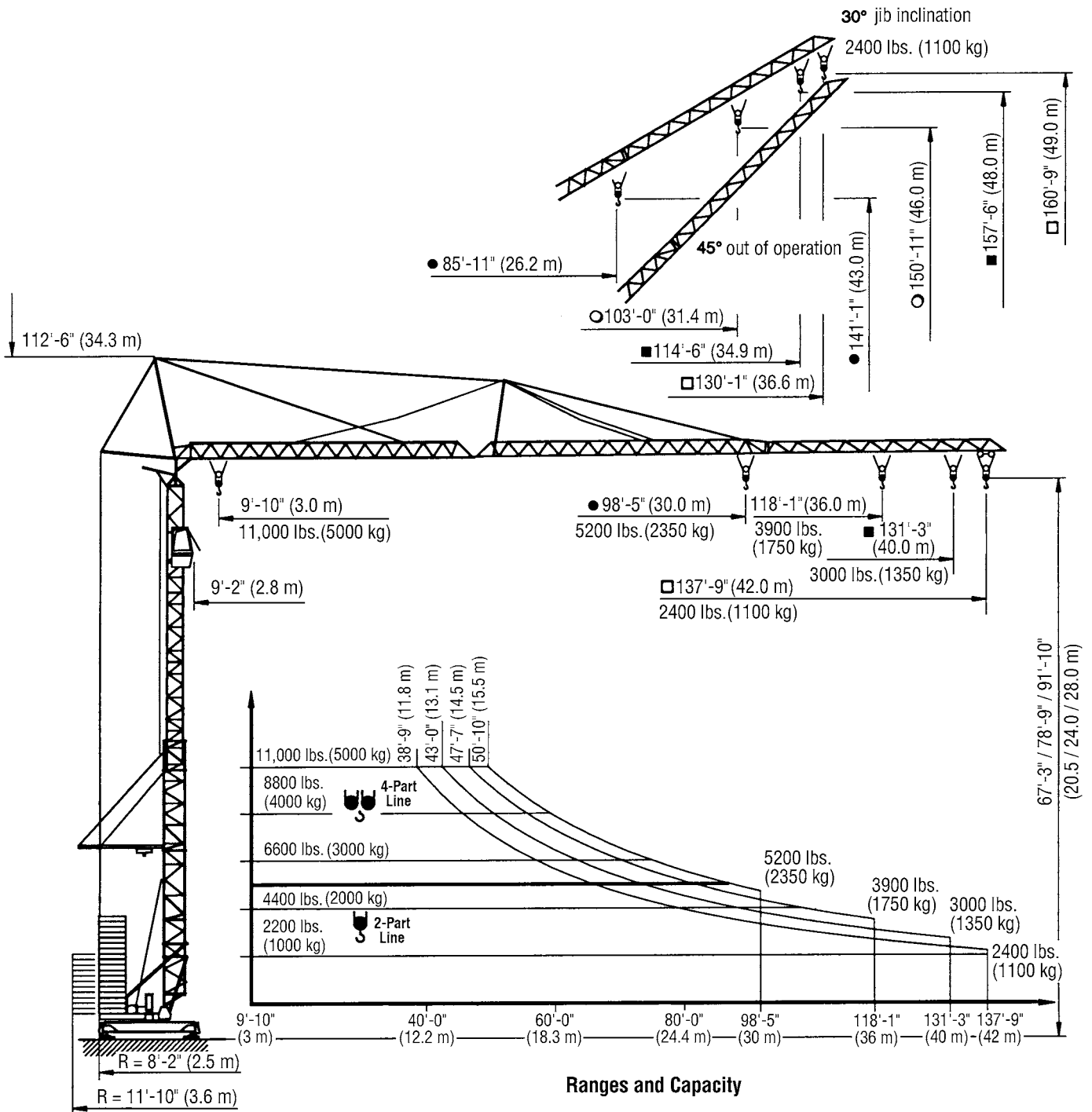
4 Part	Hook	Ft.	51	62	80	98			
Block	Radius	Meters	15.54	18.87	24.25	30			
Jib Length	98'	Lbs	11,025	8,820	6,615	5,182			
	30m	KG	5.000	4.000	3.000	2.350			
4 Part	Hook	Ft.	48	58	74	89	118		
Block	Radius	Meters	14.53	17.62	22.61	27.14	36		
Jib Length	118'	Lbs	11,025	8,820	6,615	5,182	3,859		
	36m	KG	5.000	4.000	3.000	2.350	1.750		
4 Part	Hook	Ft.	43	52	67	83	106	131	
Block	Radius	Meters	13.11	15.86	20.3	25.37	32.2	40	
Jib Length	131'	Lbs	11,025	8,820	6,615	5,182	3,859	2,977	
	40m	KG	5.000	4.000	3.000	2.350	1.750	1.350	
4 Part	Hook	Ft.	39	46	59	73	95	117	138
Block	Radius	Meters	11.77	14.02	18.13	22.33	28.86	35.56	42
Jib Length	138'	Lbs	11,025	8,820	6,615	5,182	3,859	2,977	2,426
	42m	KG	5.000	4.000	3.000	2.350	1.750	1.350	1.100



PEINER SMK 308

Self-Erecting Tower Crane
11,000 lbs. (5000 kg)
Lifting Capacity

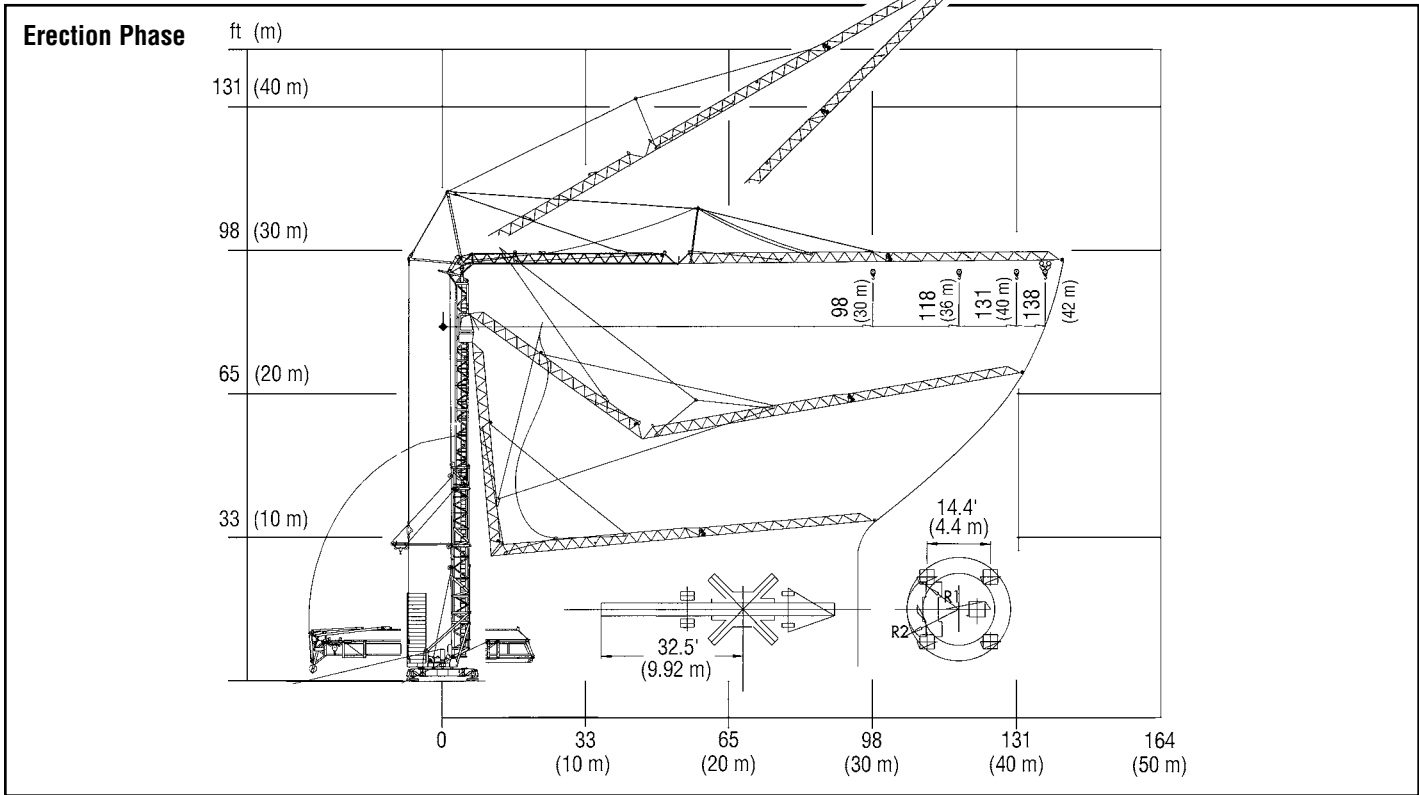
SPECIFICATIONS



Machines shown may have optional equipment.

simple, available and cost effective™

PEINER SMK 308



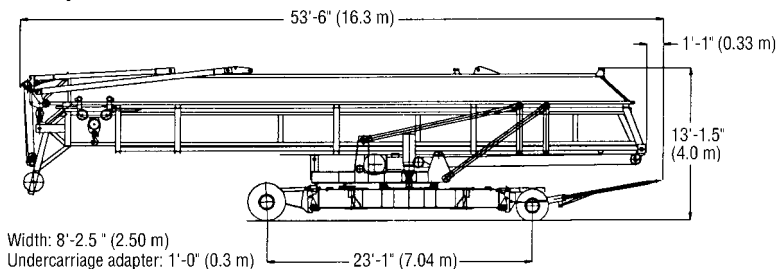
Speeds

Type	Icon	2-Part Line		4-Part Line		480 V / 60 Hz / 3 ph			
		ft./min m/min	lbs. (kg)	ft./min m/min	lbs. (kg)	Jib-inclination 30°	Power HP (kW)		
PU 15-25/3	Icon	205 (62.5)	3300 (1500)	102 (31.0 m)	6600 (3000)	2-Part Line	205 (62.5)	2400 (1100)	24.1 (18)
		102 (31.0)	5500 (2500)	51 (15.5 m)	11000 (5000)		102 (31.0)		
		24 (7.3)		12 (3.65)			24 (7.3)		
PU S4-50/2	Icon	v= 177/87 fpm (jib-inclination 30°; v= 87 fpm; 2400 lbs) (54/27 m/min)						6.4 (4.8)	
K 2-55/1	Icon	v= 98 fpm (30 m/min)						2 x 3.5 (2.6)	
K WB 80/3	Icon	n= 0 → 1.02 rpm						7.7 (5.7)	

Weights and Sizes

	Standard R= 11'-10" (3.6 m)	City Version R= 8'-2" (2.5 m)
Construction weight	39,700 lbs. (18 000 kg)	
Counterweight	54,200 lbs. (24 600 kg)	81,300 (36 900 kg)
Central ballast (at 30° or 45°)	11,000 lbs. (5000 kg)	—
Max. wheel load	70,000 lbs. (31 700 kg)	74,000 lbs. (33 600 kg)
Track gauge/ wheel gauge	14'-9" x 14'-5" (4.5 m x 4.4 m)	
Height of sight from cab	83'-8" (25.5 m) 70'-6" (21.5 m) 59'-1" (18.0 m)	
Cable winder (length of track)	236'-3" (72.0 m)	
Cable cross section	AWG 6	
Rail	S 41/ S 49	
Internal curve radius rail undercarriage curve going	27'-11" (8.5 m)	

Transport dimensions



Width: 8'-2.5" (2.5 m)

Undercarriage adapter: 1'-0" (0.3 m)

For more information, product demonstration, or details on lease and rental plans, please contact your local Terex Towers Distributor.

We reserve the right to amend these specifications at any time without notice. The only warranty applicable is our standard written warranty applicable to the particular product and sale. We make no other warranty, expressed or implied.

TEREX TOWERS

202 Raleigh Street
Wilmington, NC 28412 USA
(910) 395-8500 • FAX: (910) 395-8547
E-mail: wilmington@terexlifting.com

www.terexlift.com