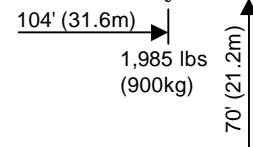
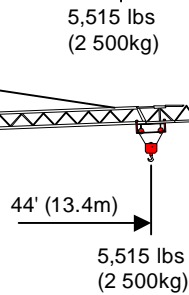
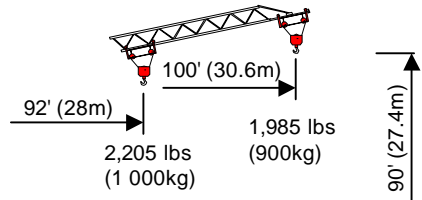
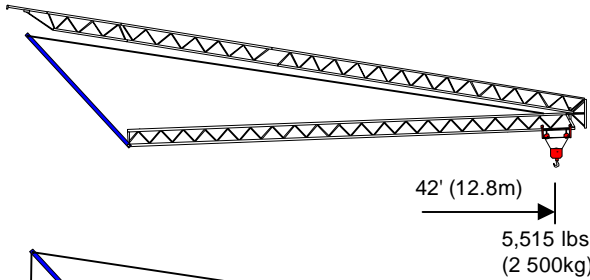




20104 (294-S)

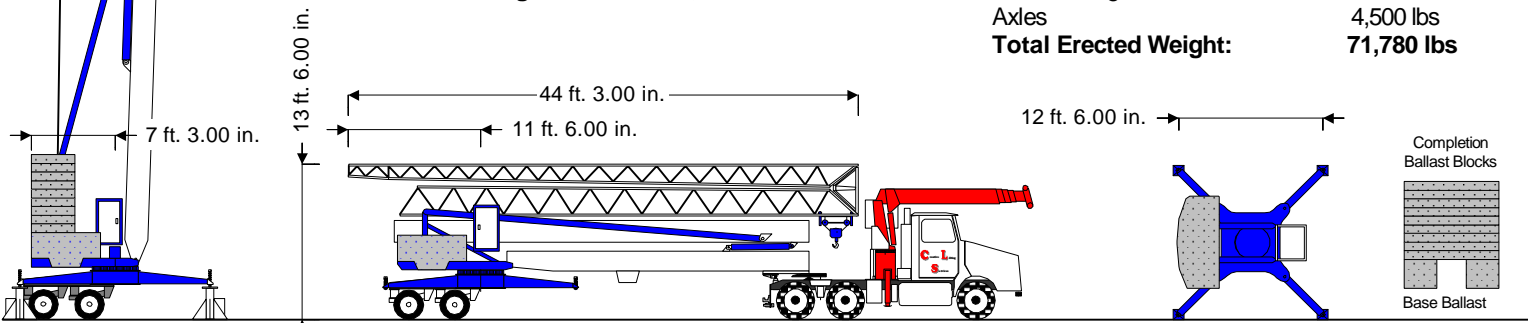
70' - 104' - 1,985 lbs
(21 - 32 - 900)



Power Requirements
Single Phase OR Three Phase
240V or 480V

Crane Weight: 24,920 lbs
Base Ballast: 7,275 lbs X 2 = 14,550 lbs
Axles: 4,500 lbs
Total Towed Weight: 43,970 lbs

Base Ballast: 7,275 lbs X 2 = 14,550 lbs
C Ballast Blocks: 3,090 lbs X 9 = 27,810 lbs
Total Ballast: 42,360 lbs
Crane Weight: 24,920 lbs
Axles: 4,500 lbs
Total Erected Weight: 71,780 lbs



Hook	Rt.	44	45	49	52	59	66	72	79	85	92	98	104
Radius	Meters	13.4	13.8	15	16	18	20	22	24	26	28	29.8	31.6
104'	Lbs	5,513	5,292	4,829	4,476	3,881	3,440	3,065	2,756	2,514	2,293	2,139	1,985
31.6m	KG	2,500	2,400	2,190	2,030	1,760	1,560	1,390	1,250	1,140	1,040	0,970	0,900

Creative Lifting Services Inc.

Call Kelly or Will Phone: 303-659-8102 Fax: 303-659-5314

kelly@creativelifting.com will@creativelifting.com www.creativelifting.com